



2X-SITE

www.2x-site.com



GRACSHAW

RAVE ABOUT PERFORMANCE
COLLECTION 2015



Due to the reproduction process used in the production of this catalogue, DOUBLE SITE MARKETING SDN. BHD. are unable to guarantee that the colours reproduced replicate accurately the true product colours. Every care is taken to ensure that all information in this catalogue is correct at the time of going to press. Product specification and prices may be changed at any time. DOUBLE SITE MARKETING SDN. BHD. reserve the right to alter specification without prior notice.

All right reserved

Photo: K. K. Khor (MOLISE STUDIO)
Design: Jell Kok (WAISOHO DESIGN)



GRACSHAW

RAVE ABOUT PERFORMANCE





EVOLVES WITH YOU

2X-SITE was established in 2006 with a vision to provide market-leading helmets and accessories with superior quality, safety and designs in line with the customers' ever-evolving needs. To achieve this we paid close attention to the riding community's changing needs and followed their latest developments closely.

We observed how motorcycle technology, safety regulations, lifestyles and trends have evolved over time and took note of how these changes affect our customers' expectations. We organized motorcycling events across the country to create meaningful first-hand connections with our target customers. We asked questions about their ideals and aspirations as a rider. We listened. We evolved with our customers. Because we are riders as well.

BEYOND SAFETY

Adopting this customer-focussed approach allowed us to see what other manufacturers could not. It provided us with insights beyond the basic safety role of a helmet. We learned that riders expected more than just protection from their helmets – and we were determined to meet, and exceed those expectations.

With these market insights as guidance, 2X-SITE introduced **X-Dot**, **Grantorc**, **Grayfosh** and **Gracshaw**, four distinctive range of helmets designed to cater to specially identified niche markets with specific preferences. In addition to uncompromising safety standards, our products are also affordable priced with the added advantage of stylish designs.

HELMING A QUALITY REVOLUTION

Our total commitment to understanding and evolving in line with our customers' needs has catapulted the 2X-SITE brand to a strong market position within a relatively short period of time. And we have absolutely no intentions to rest on our laurels. Moving forward, we will continue to innovate to provide our customers with even more cutting edge quality and trendsetting designs with an ever-keen emphasis on safety.



OUR VISION

To be a world-class leading manufacturer of motorcycle helmets and accessories that evolves with its customers' needs, demands and expectations.



OUR MISSION

To inspire the next generation of motorcycle enthusiasts by producing helmets and accessories that are avant-garde in style, excellent in quality and cutting-edge in technology.



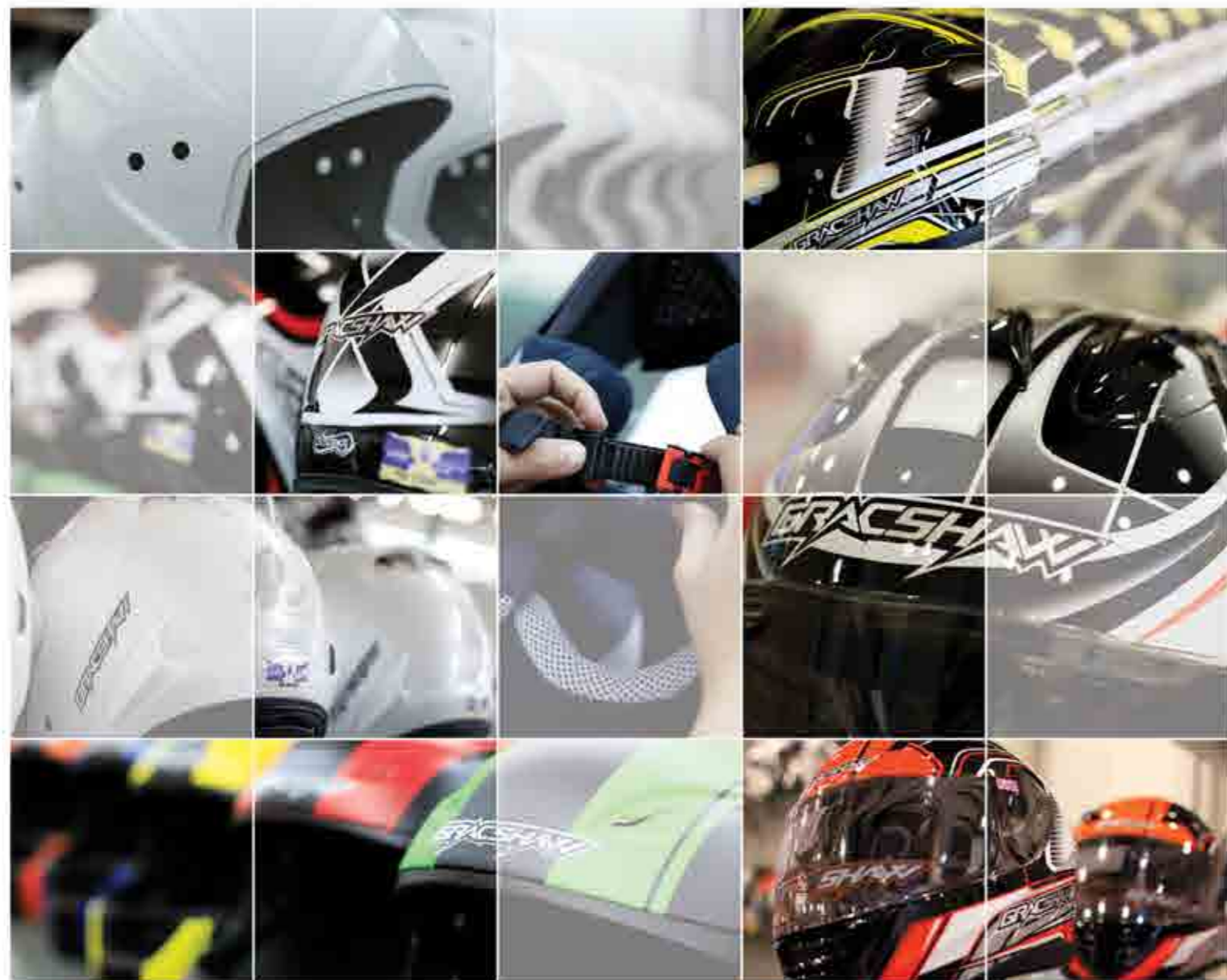
CRAFTSMANSHIP

When you choose a 2X-SITE product, impeccable quality and precision comes as standard. Our craftsmen strive to exceed the highest standards of quality, comfort and value that meet international standards to offer the finest workmanship from creation to production.



SAFETY ASSURANCE

All of our helmets are in compliance with the standards set by either the **Malaysian Standards of MS 1:1996 (SIRIM)** or the **ECE 22.05** Helmet Safety Standard. As part of our stringent test procedures, every batch of helmets are sent to our Quality Assurance team where they are meticulously and thoroughly inspected and tested in every aspect to ensure your absolute safety and satisfaction, before they are even delivered to the market and into your hands.



1. Measure your head: Wrap a tape measure around your head about one inch (2.5 cm) above your eyebrows.

2. Use the sizing chart to select the helmet size that corresponds most closely to your head measurement. If your head size falls between two helmet sizes, try on the larger helmet first and then the smaller size.

3. Try on the helmet by grasping both chin straps to pull the helmet completely onto your head, ensuring that the top of your head is in contact with the top of the helmet interior.

4. Check for a proper fit. To make sure your helmet is the right size, check that:

- The helmet inner lining fits snugly around your head.
- The top pad presses firmly on your head.
- The cheek pads contact your cheeks.
- There is no space around your brow under the inner lining.

Test this by trying to insert your fingers. If the helmet does not fit snugly, try on a smaller size.

5. Check your field of vision when trying on a helmet. Some helmets may obstruct or block your vision when looking left, right, up, or down.

6. Test the helmet fit by placing your hands on each side of the helmet. While holding your head as motionless as possible, try rotating your helmet from left to right then up and down. If you can feel the helmet padding sliding on your head, it is too big, try a size smaller. You should feel the helmet move the skin on your head and face as you try to move the helmet.

7. Fasten the retention system (chin strap) as tight as possible under your jaw without causing pain. There must be no slack in the strap; and the strap must be tight up against your jaw.

8. Test the retention system (chin strap)

- Put your hands on the back of the helmet and try to push the helmet off by rotating it forward.
- Put your hands on the front of the helmet above your forehead (or on the chin guard) and try to push the helmet off by rotating backward.

Helmet Size Conversion Chart

Helmet Size	XXS	XS	S	M	L	XL	XXL	XXXL
Hat Size	6 3/8–6 1/2	6 5/8–6 3/4	6 7/8–7	7 1/8–7 1/4	7 3/8–7 1/2	7 5/8–7 3/4	7 7/8–8	8 1/8–8 1/4
Centimeter	51–52	53–54	55–56	57–58	59–60	61–62	63–64	65–66
Inches	20–20 1/2	20 7/8–21 1/4	21 5/8–22	22 1/2–22 7/8	23 1/4–23 5/8	24–24 3/8	24 3/4–25 1/4	25 5/8–26





OPEN FACE



DEMI-JET



FULL FACE



OFFROAD

GRACSHAW™

OPEN FACE

G818

DEMI-JET

EDGE

FULL FACE

G9008/G9999

OFFROAD

G8008

G8888

RAVE ABOUT PERFORMANCE

OPEN FACE



G818

XO | BZ | URBAN | SOLID





G818
XO

SHELL | ABS + PC
VISOR | Clear Polycarbonate 3D Visor
FABRIC | Dry Comfort with Hygienic Treatment
RETENTION SYSTEM | Double D
AVAILABLE SIZE | L
CERTIFICATION | Malaysian Standards MS 1, 1996

FEATURES
 Integrated Air Intake and Discharge System
 Fully Detachable Interior Liner and Cheek Pads
 Enhanced Noise Insulation



Model | Code
 G818 | XO-BLACK/SILVER

Model | Code
 G818 | XO-BLACK/WHITE





G818
BZ

SHELL : ABS + PC
VISOR : Clear Polycarbonate 3D Visor
FABRIC : Dry Comfort with Hygienic Treatment
RETENTION SYSTEM : Double D
AVAILABLE SIZE : L
CERTIFICATION : Malaysian Standards MS 1 : 1996

FEATURES
 Integrated Air Intake and Discharge System
 Fully Detachable Interior Liner and Cheek Pads
 Enhanced Noise Insulation



MODEL : G818
 CODE : BZ-BLACK / BLUE



MODEL : G818
 CODE : BZ-WHITE / RED

G818
URBAN

SHELL : ABS + PC
VISOR : Clear Polycarbonate 3D Visor
FABRIC : Dry Comfort with Hygienic Treatment
RETENTION SYSTEM : Double D
AVAILABLE SIZE : L
CERTIFICATION : Malaysian Standards MS 1 : 1996

FEATURES
 Integrated Air Intake and Discharge System
 Fully Detachable Interior Liner and Cheek Pads
 Enhanced Noise Insulation



MODEL : G818
 CODE : URBAN - BLACK





G818

SHELL - ABS ± PC
VISOR - Clear Polycarbonate 3D View
FABRIC - Dry Comfort with Hygienic Treatment
RETENTION SYSTEM - Double D
AVAILABLE SIZE - L
CERTIFICATION - Malaysian Standards MS 1, 1996

FEATURES
 Integrated Air Intake and Discharge System
 Fully Detachable Interior Liner and Cheek Pads
 Enhanced Noise Insulation



MODEL CODE
G818 GLASS BLACK



MODEL CODE
G818 JET BLACK



MODEL CODE
G818 GLASS WHITE



MODEL CODE
G818 GLASS BLUE



MODEL CODE
G818 METALLIC GRAY



MODEL CODE
G818 SAPPHIRE SILVER

DEMI-JET

GRACSHAW

DEMI-JET
EDGE



EDGE

SHELL : ABS + PC
VISOR : Clear Polycarbonate 3D Visor
FABRIC : Dry Comfort with Hygienic Treatment
RETENTION SYSTEM : Quick Release Buckle
AVAILABLE SIZE : L
CERTIFICATION : Malaysian Standards MS 1, 1996

FEATURES
 Integrated Air Intake and Discharge System
 Fully Detachable Interior Liner and Cheek Pads



MODEL CODE
 EDGE BLUE / WHITE



MODEL CODE
 EDGE RED / WHITE



MODEL CODE
 EDGE BLACK / YELLOW



MODEL CODE
 EDGE WHITE / BLACK



GLACIER



G9009 | G9999

GC

- SHELL : ABS + PC
- VISOR : Clear Polycarbonate 3D Visor
- FABRIC : Dry-Comfort with Hygienic Treatment
- RETENTION SYSTEM : Quick Release Buckle
- AVAILABLE SIZE : L-XL
- CERTIFICATION : Malaysian Standards MS 1-1996

- FEATURES:**
 Integrated Air Intake and Discharge System
 Fully Detachable Interior Liner and Cheek Pads
 Enhanced Noise Insulation



MODEL CODE
G9999 GC-BLUE



MODEL CODE
G9999 GC-GREEN



MODEL CODE
G9999 GC-ORANGE



MODEL CODE
G9999 GC-RED



MODEL CODE
G9999 GC-YELLOW





009
00C
K

G9009 | G9999
SCK

SHELL - ABS + PC
VISOR - Clear Polycarbonate 3D Visor
FABRIC - Dry Comfort with Hygienic Treatment
RETENTION SYSTEM - Quick Release Buckle
AVAILABLE SIZE - L-XL
CERTIFICATION - Malaysian Standards MS 1-1996

FEATURES:
 Integrated Air Intake and Discharge System
 Fully Detachable Interior Liner and Cheek Pads
 Enhanced Noise Insulation



MODEL CODE
G9999 SCK-BLUE



MODEL CODE
G9999 SCK-GREEN



MODEL CODE
G9999 SCK-ORANGE



MODEL CODE
G9999 SCK-RED



MODEL CODE
G9999 SCK-SILVER





G9009 | G9999 SEILON

SHELL : ABS + PC
VISOR : Clear Polycarbonate 3D Visor
FABRIC : Dry Comfort with Hygienic Treatment
RETENTION SYSTEM : Quick Release Buckle
AVAILABLE SIZE : L, XL
CERTIFICATION : Malaysian Standards MS 1:1996

FEATURES
 Integrated Air Intake and Discharge System
 Fully Detachable Interior Liner and Cheek Pads
 Enhanced Noise Insulation



G9009 | G9999 REAR

SHELL : ABS + PC
VISOR : Clear Polycarbonate 3D Visor
FABRIC : Dry Comfort with Hygienic Treatment
RETENTION SYSTEM : Quick Release Buckle
AVAILABLE SIZE : L, XL
CERTIFICATION : Malaysian Standards MS 1:1996

FEATURES
 Integrated Air Intake and Discharge System
 Fully Detachable Interior Liner and Cheek Pads
 Enhanced Noise Insulation



MODEL
SEILON
CODE
REAR-RED



MODEL
REAR
CODE
REAR-BLUE





G9009 | G9999 ENIGMA

SHELL - ABS + PC

VISOR - Clear Polycarbonate 3D Visor

FABRIC - Dry Comfort with Hygienic Treatment

RETENTION SYSTEM - Quick Release Buckle

AVAILABLE SIZE - L, XL

CERTIFICATION - Malaysian Standards MS 1, 1996

FEATURES

Integrated Air Intake and Discharge System

Fully Detachable Interior Liner and Cheek Pads

Enhanced Noise Insulation



MODEL CODE
L9999 ENIGMA-BLACK



MODEL CODE
L9009 ENIGMA-WHITE



OFFROAD

GRACSHAW™

OFFROAD

G8008 | G8888



G8008 STAR

SHELL - ABS + PE
FABRIC - Dry Comfort with Hygiene Treatment
RETENTION SYSTEM - Quick Release Buckle
AVAILABLE SIZE - L, XL
CERTIFICATION - Malaysian Standard MS1-1998

FEATURES:
 Fully Detachable Interior Liner and Cheek Pads
 Wide Peripheral Vision



MODEL CODE
G8008 STAR - BLACK/BLUE



MODEL CODE
G8008 STAR - WHITE/BLUE



MODEL CODE
G8008 STAR - BLACK/RED



MODEL CODE
G8008 STAR - WHITE/RED

OFFROAD





G8888M ML

SHELL : ABS + PC

VISOR : Clear Polycarbonate 3D Visor

FABRIC : Dry Comfort with Hygienic Treatment

RETENTION SYSTEM : Quick Release Buckle

AVAILABLE SIZE : L, XL

CERTIFICATION : Malaysian Standards MS 1, 1996

FEATURES

Fully Detachable Interior Liner and Cheek Pads
Wide Peripheral Vision



MODEL : CODE
G8888M : ML - GOLD



MODEL : CODE
G8888M : ML - RED





G8888M BR

SHELL - ABS + PC
VISOR - Clear Polycarbonate 3D Visor
FABRIC - Dry Comfort with Hygienic Treatment
RETENTION SYSTEM - Quick Release Buckle
AVAILABLE SIZE - L-XL
CERTIFICATION - Malaysian Standards MS 1-1996

FEATURES:
 Fully Detachable Interior Liner and Cheek Pads
 Wide Peripheral Vision



MODEL CODE
 G8888 BR - BLACK



MODEL CODE
 G8888 BR - WHITE

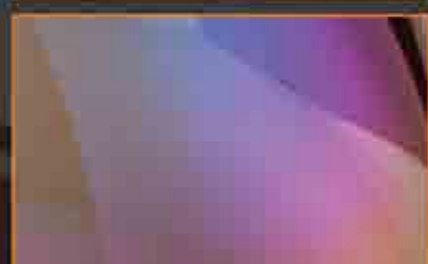


MOTORCROSS

GRACSHAW

GRACSHAW VISORS

GRACSHAW'S accessories enable you to fit your helmet to your personality and after sales service is provided to maintain it.



CATEGORY	MODEL	TINTED VISOR			
		 LIGHT BLACK	 DARK BLACK	 SILVER	 RAINBOW
DEMI-JET	EDGE	✓			✓
OPEN FACE	G818	✓		✓	✓
FULL FACE	G9009	✓			✓
	G9999	✓			✓
OFFROAD	G8008				
	G8888	✓			✓

RAVE ABOUT PERFORMANCE



GRACSHAX



2X-SITE

DOUBLE SITE MARKETING SDN. BHD.

(763864-H)

Address: Lot: 825, Jalan Sungai Korok, Mukim Jitra, 06000 Jitra, Kedah, Malaysia.

Tel: +604-916 3876 Fax: +604-917 0877

Email: contact@2x-site.com Facebook: X-Dot Design.Helmet